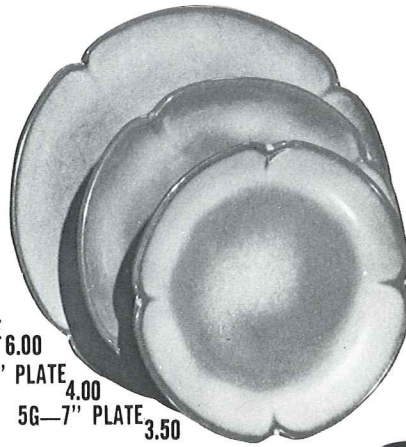


\*5AB—CREAM & SUGAR SET 8.00



\*5V—2 QT. BAKER/BEAN POT 9.25  
\*5V/W—BAKER/W WARMER SET 16.50



5F—10" PLATE 6.00  
5FS—9" PLATE 4.00  
5G—7" PLATE 3.50



\*5M—16 OZ. MUG 4.50



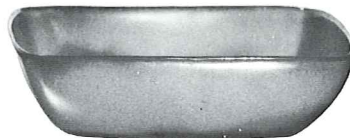
\*5A—12 OZ. CREAMER 3.25



\*5B—SUGAR WITH LID 5.00



\*5W—3 QT. BAKER/BEAN POT 13.25  
\*5W/W—BAKER/W WARMER SET 20.50



\*5NS—9" VEGETABLE 4.75



\*5CC—5 OZ. TEACUP 2.75



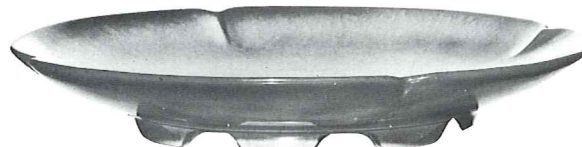
5C—CUP 3.25  
5E—5 1/2" SAUCER 2.75



\*5H—SALT & PEPPER 4.75



\*5N—4 1/2" QT. BOWL 17.50



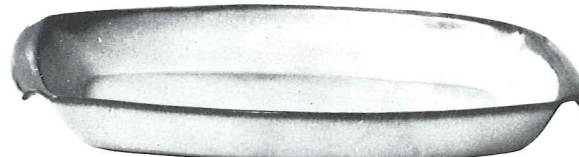
5FC—15" CHOP PLATE 25.00



\*5LC—6 OZ. JUICE 3.25



\*5L—12 OZ. TUMBLER 3.75



5P—17" PLATTER 17.50

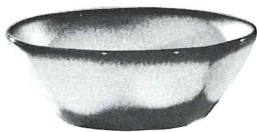
\*5Q—13" PLATTER 7.75



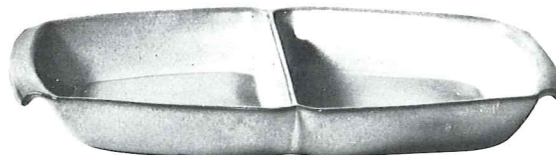
\*5DB—6 OZ. SUGAR 3.25



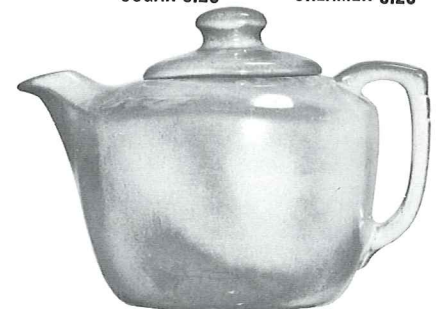
\*5DA—6 OZ. CREAMER 3.25



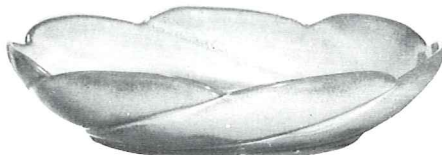
\*5XL—20 OZ. BOWL 3.75  
\*5X—14 OZ. CEREAL 3.25  
\*5XS—9 OZ. FRUIT 2.75



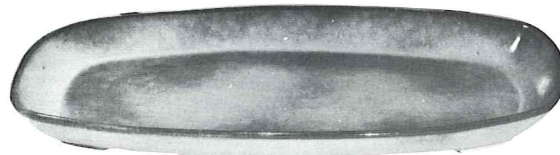
\*5QD—13" DIVIDED BOWL 7.75



\*5TL—12 CUP TEAPOT 13.00



\*218—12" BOWL 7.75



5QS—13" PLATTER 5.00

\*5PS—9" TRAY 3.75

\*6P—11" PLATTER 4.50



\*6S—TWO SPOUT GRAVY 6.50



\*6T—6 CUP TEAPOT 9.25



\*6J—2 CUP TEAPOT 6.50



\*5D—3 QT. PITCHER 12.50

THIS PAGE AVAILABLE IN BROWN SATIN, DESERT GOLD, PRAIRIE GREEN, NAVY BLUE, & AUTUMN YELLOW EXCEPT WHERE NOTED\*

\*AVAILABLE IN: 8 STANDARD COLORS PLUS COFFEE BROWN AND NAVY BLUE — EXCEPT WHERE NOTED.

ADD 50% FOR FLAME. Dinnerware Not Available in Terra Cotta. SIZES ARE APPROXIMATE AND MAY VARY SLIGHTLY. Page 19